



7 Warana Way MOUNT ELIZA VIC

3 2 2

Showcasing an impeccable designer palette and crafted to the highest standards, this brand-new single-level residence redefines modern village living, delivering an exceptional fusion of luxury, low-maintenance ease and timeless style. Embracing a fresh coastal aesthetic this home has an inspired floorplan and exceptional craftsmanship. With a spacious open-plan living area flowing seamlessly to an alfresco deck and lawns, the home features exquisite Smeg kitchens, engineered oak floors, electric fireplace, 2 stylish bathrooms and internal access to double remote garage.

Type : House
Price : \$1,495,000 - \$1,595,000
Land Size : 395 sqm
View : <https://www.crowdercre.com.au/8646524>

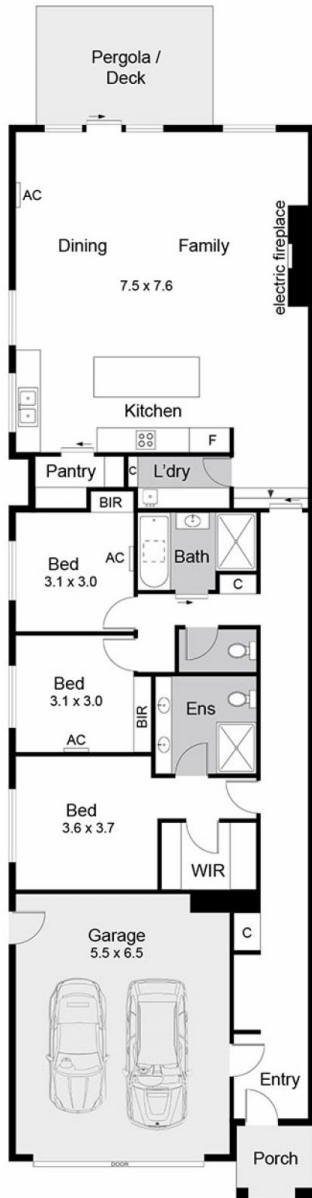
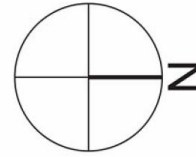


Stewart Lardner
9787 7221

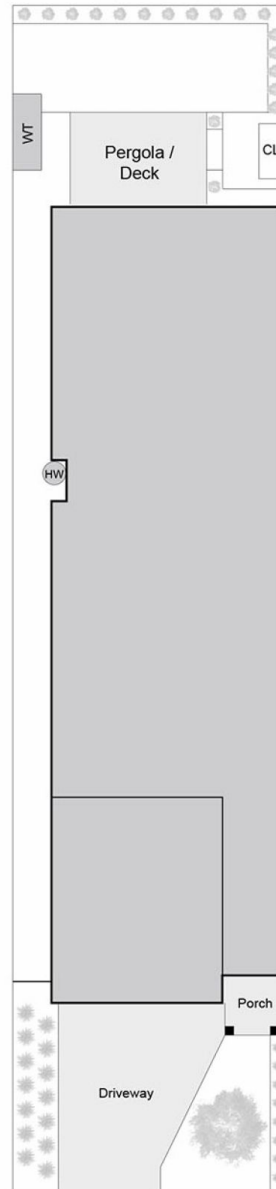


James Crowder
9787 7221

Internal Living Area - 17.9 squares (approx)
Garage - 4.3 squares (approx)
Total - 22.2 squares (approx)



Floor Plan



Site Plan

7 Warana Way, Mount Eliza

This floorplan is for illustration purposes only and no warranty is given to its accuracy. Purchasers are advised to carry out their own investigations. Produced by realtywriters (03) 5970 2222