



1/131-133 Mount Eliza Way MOUNT ELIZA VIC

2  1  1 

Revel in a life of absolute convenience with all your daily wants and needs literally footsteps from your door, this charming 2 bedroom residence offers elegant space and surprising privacy right in the heart of one of the Mornington Peninsula's most loved villages.

Just steps from the supermarket, butcher, bakery, fruiterer and chic cafés, as well as essential services, medical facilities, and a bus stop directly opposite, the home delivers all at a moment's notice, while John Butler Reserve is also just across the road to walk your dog or enjoy leisure time.

Fronting a boutique group of charming homes and enjoying the privilege of being right beside tranquil gardens spread

Type : Unit
Price : \$ 660,000
View : <https://www.crowdercre.com.au/8644288>

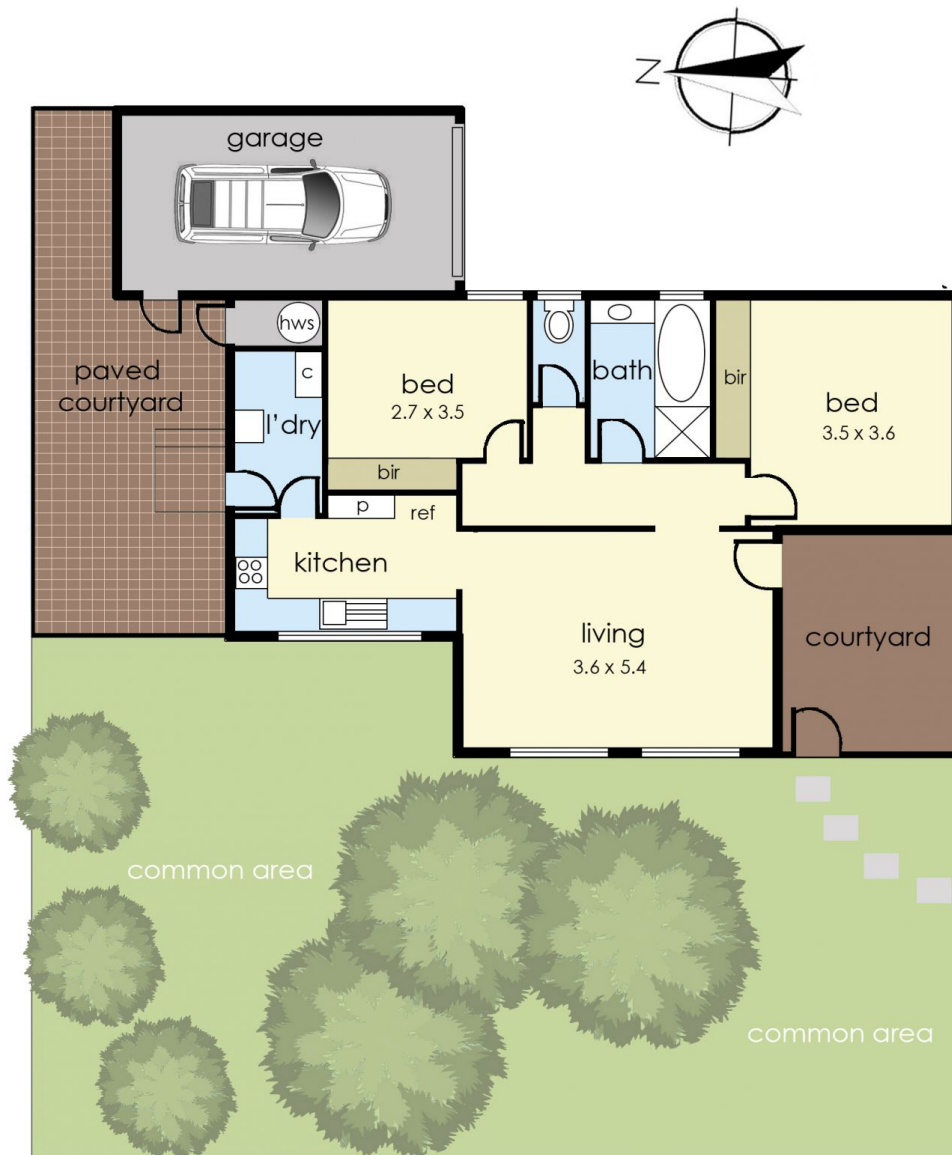


Ben Crowder
9787 7221



Will Crowder
9787 7221

[For full version visit the website](https://www.crowdercre.com.au)



1/131-133 Mount Eliza Way, Mount Eliza

The floor plan is provided for general information and illustrative purposes only. All measurements, dimensions, and layouts are approximate and may vary from the actual property. While every effort has been made to ensure accuracy, no responsibility is taken for any error, omission, or misstatement. Prospective buyers should not rely solely on the floor plan and are encouraged to conduct their own inspections and verify all details independently. The design and content of this floor plan remain the property of DND Floor Plans. ©