



117 Bellbird Road MOUNT ELIZA VIC

4 3 4

Heavenly serenity on more than 2/3 of an acre (approx.) within one of Mount Eliza's most peaceful pockets, this exceptional lifestyle property offers a sanctuary of expansive dimensions and complete privacy, where beautiful gardens and generous living spaces create an exceptional family retreat.

Set well back beyond a sweeping horseshoe driveway and double portico entry, the substantial 4 bedroom plus study residence offers a fabulous floorplan that celebrates its picturesque grounds with multiple entertaining zones that wrap gracefully around the inground swimming pool and tranquil gardens.

Just doors from the beloved French bakery at the Top

[For full version visit the website](https://www.crowdercre.com.au/8628009)

Type : House
Land Size : 2816 sqm
View : <https://www.crowdercre.com.au/8628009>



Will Crowder
9787 7221

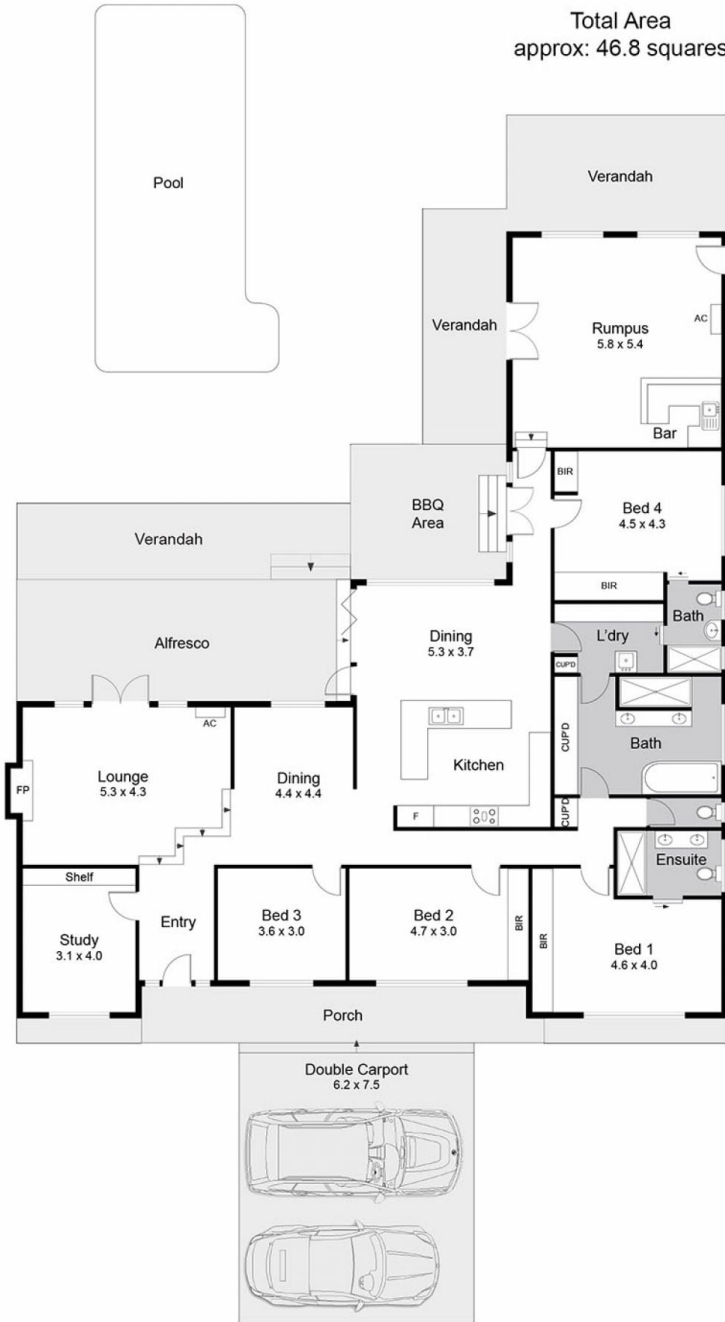


Ben Crowder
9787 7221

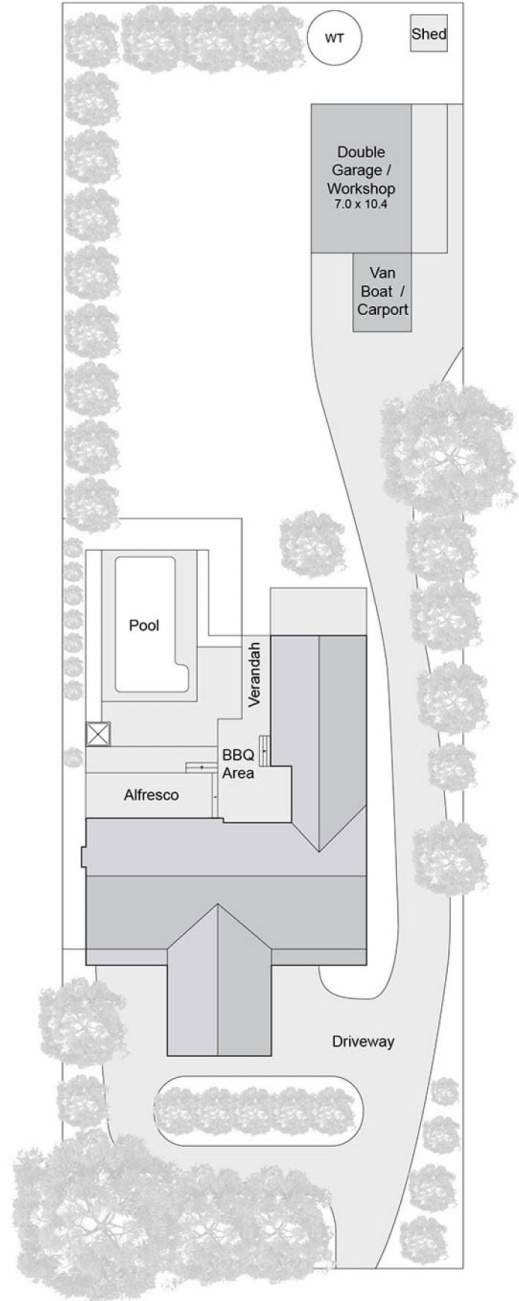
Internal Living Area
approx: 27.5 squares

External Area
approx: 19.3 squares

Total Area
approx: 46.8 squares



Floor Plan



Site Plan

117 Bellbird Road, Mount Eliza

This floorplan is for illustration purposes only and no warranty is given to its accuracy. Purchasers are advised to carry out their own investigations. Produced by realtywriters (03) 5970 2222