



10 Jubilation Court FRANKSTON SOUTH VIC

4 2 2

Blessed with a serenely beautiful outlook across a sweeping canopy of billowing treetops, this modern contemporary residence has a striking design that makes the most of a vista over a leafy Sweetwater Creek valley.

Showcasing a sensational open plan with high pitched ceilings, expanses of glass and seamless flow out to a broad balcony with the valley vista as the backdrop, the home offers timeless appeal in this coveted Frankston South court zoned for both Frankston High School and Derinya Primary, and moments from Mount Eliza Village, Frankston CBD and beaches.

Offering family-friendly zoning with all principal rooms placed conveniently on entry level, a vast open plan living

Type : House
Price : Contact Agent
Land Size : 624 sqm
View : <https://www.crowdercre.com.au/8588345>



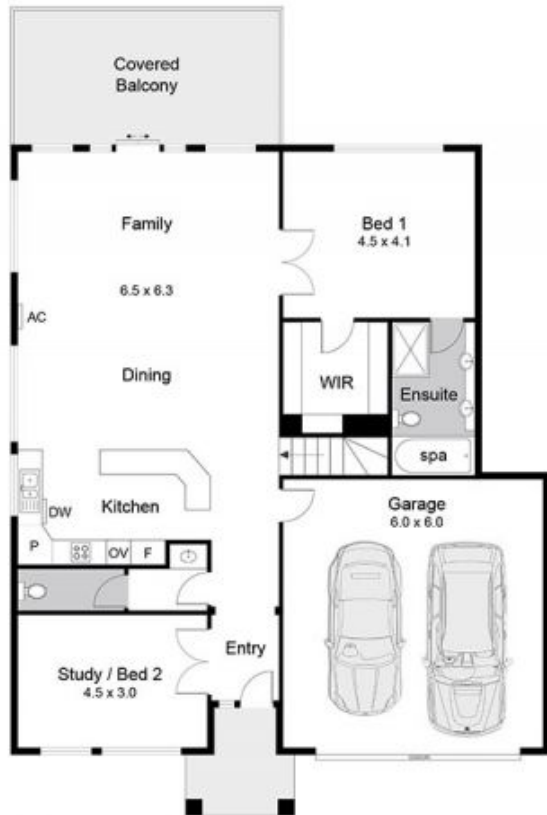
James Crowder
9787 7221



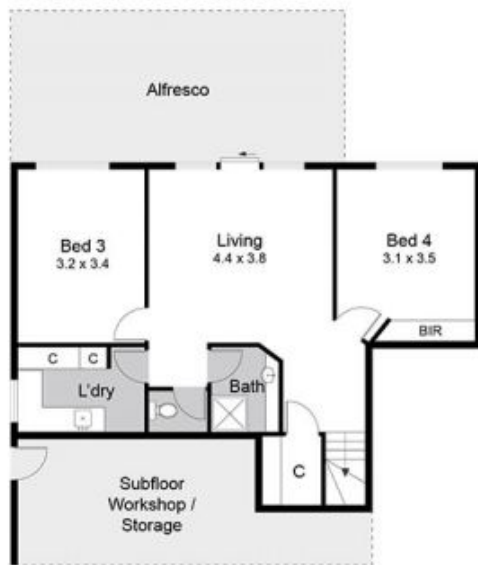
Deb Ketting-Olivier
9787 7221

[For full version visit the website](https://www.crowdercre.com.au)

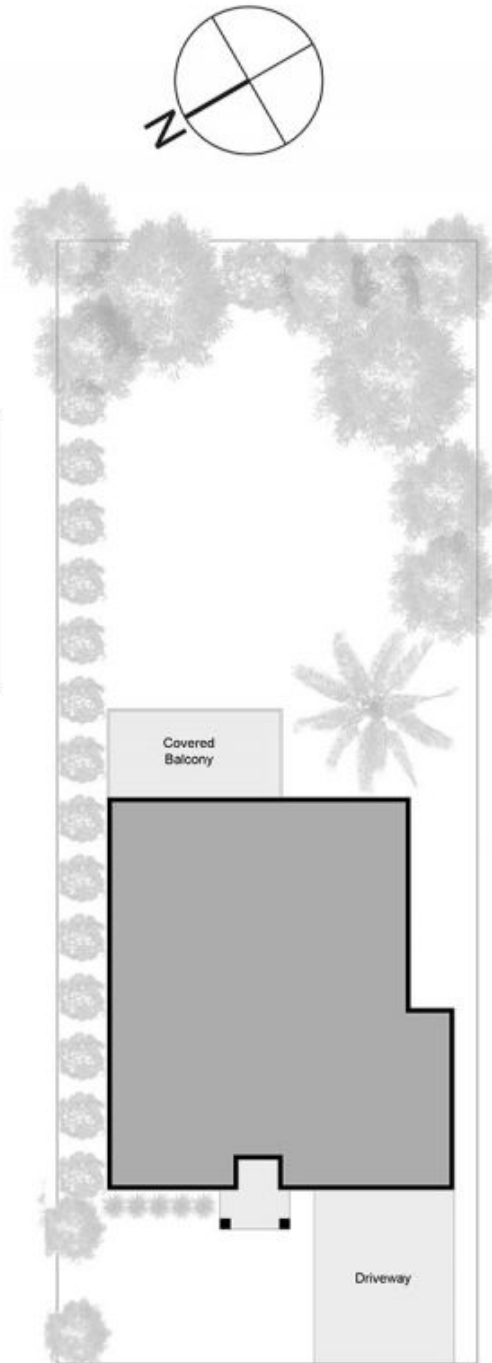
Internal Living Area - 21.8 Squares (approx)
 Garage - 4.7 Squares (approx)
 Total - 26.5 Squares (approx)



Ground Floor



Lower Floor



Site Plan

10 Jubilation Court, Frankston South

This floorplan is for illustration purposes only and no warranty is given to its accuracy. Purchasers are advised to carry out their own investigations. Produced by realtywriters (03) 5970 2222