



1/16 Cromdale Street MOUNT MARTHA VIC

3 3 2

With the beach beckoning only a few hundred metres away and the scent of the sea in the air, this light-filled 3 bedroom townhouse offers effortless style and space and a brilliant garden setting featuring a north-facing alfresco terrace and pergola.

Type : Townhouse
Price : \$1,150,000 - \$1,250,000
Land Size : 266 sqm
View : <https://www.crowdercre.com.au/8554281>

Stroll the famous Nunns Walk clifftop trail in the morning, grab a coffee from the nearby Dava Drive shops, relax in the large private front garden and enjoy all the vibrance and tranquillity of this enviable seaside lifestyle.

Featuring living areas on each level, high ceilings and engineered timber floors, the floorplan is perfect for those starting out or scaling down with ample room to live and entertain.

[For full version visit the website](https://www.crowdercre.com.au)



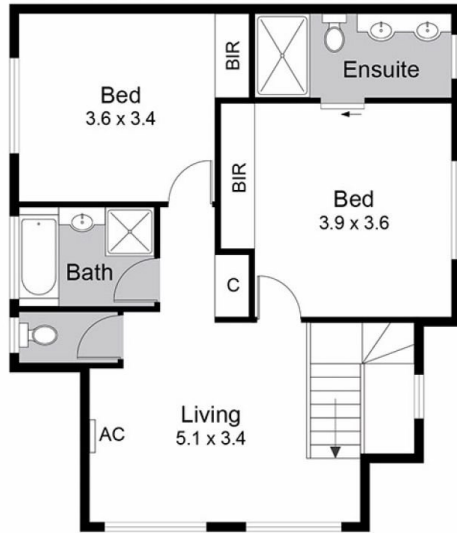
Ben Crowder
9787 7221



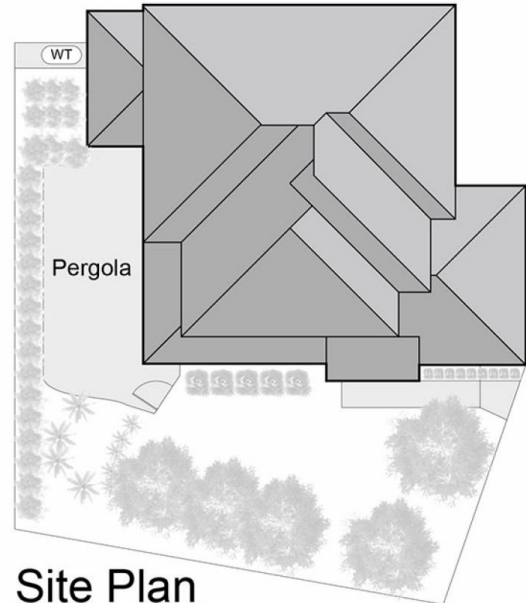
Will Crowder
9787 7221

Total Living Area = 115.5 sqm

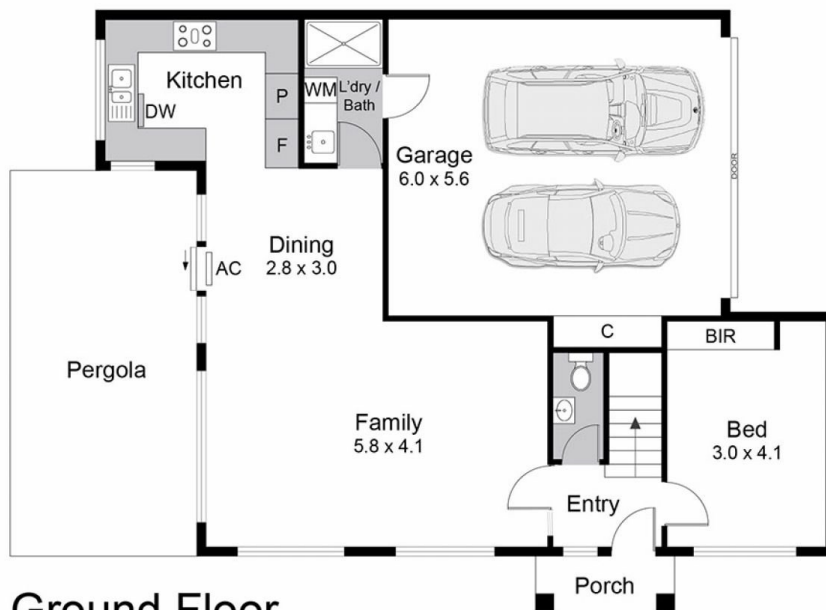
Total Land Size = 266 sqm



First Floor



Site Plan



Ground Floor



1/16 Cromdale Street, Mount Martha

This floorplan is for illustration purposes only and no warranty is given to its accuracy. Purchasers are advised to carry out their own investigations. Produced by realtywriters (03) 5970 2222