



20 Glendenning Rise MORNINGTON VIC

4 2 2

A home for all ages and stages, offering fabulous affordability and all the joys of beachside Mornington, this appealing residence holds a central position within walking distance of Bentons Square shops, Civic Reserve's sporting facilities and even Main St with a large park and playground just around the corner!

Enjoying glorious privacy behind lovely gardens at the end of a quiet court, the 4 bedroom home is filled with family practicalities and a touch of heritage charm with turned veranda posts, fretwork and bay windows.

Inside, 3 living areas all with a sense of space and volume means everyone has room to do their own thing and alfresco entertaining is superbly taken care off with a large

Type : House
Price : \$ 1,115,000
Land Size : 606 sqm
View : <https://www.crowdercre.com.au/8554280>



Will Crowder
9787 7221

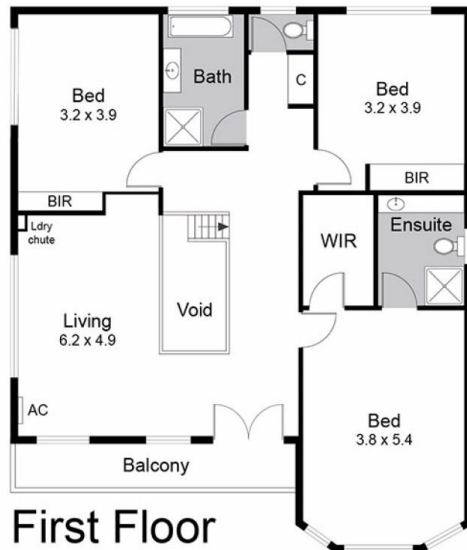


Ben Crowder
9787 7221

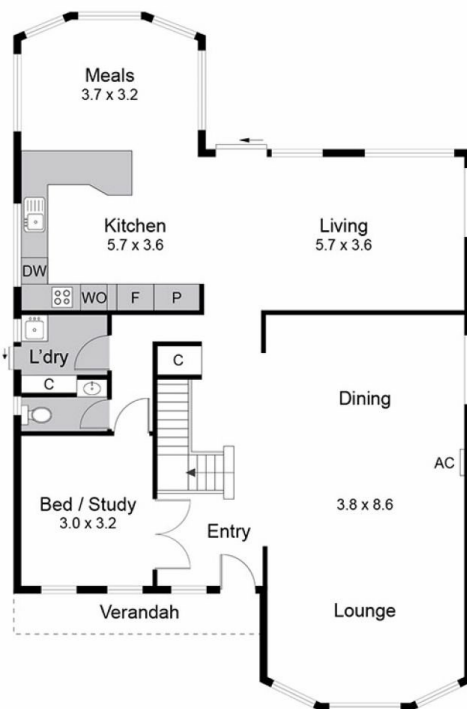
[For full version visit the website](https://www.crowdercre.com.au)

Total Living Area = 230 sqm

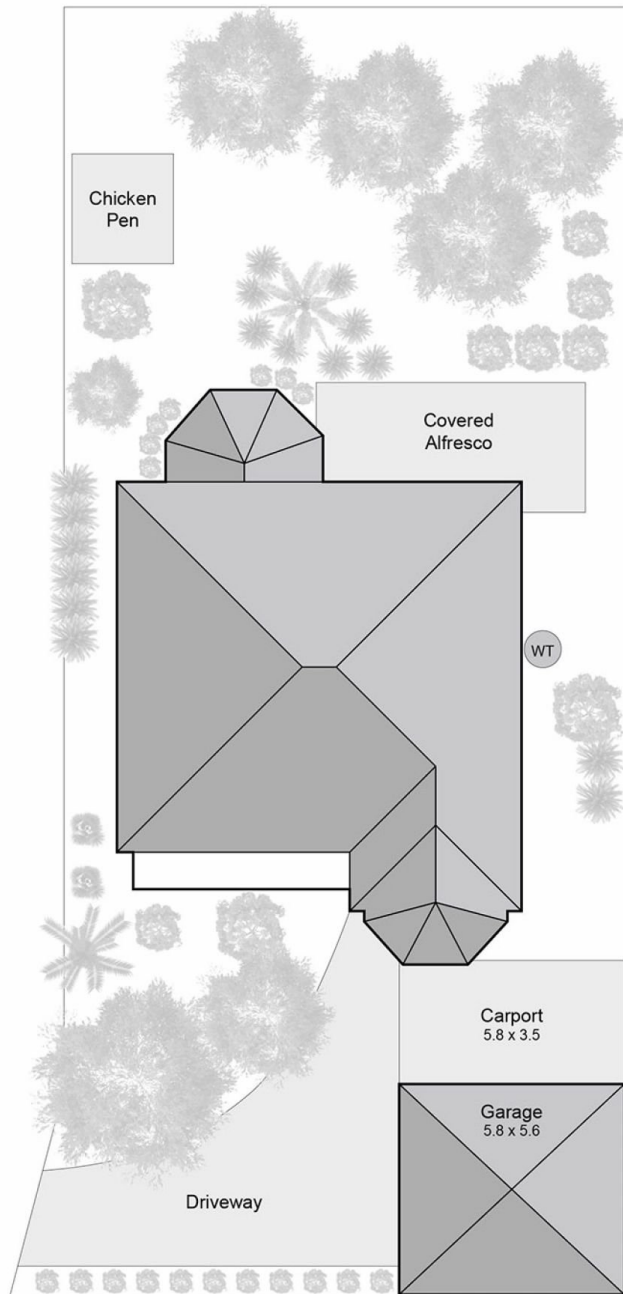
Total Land Size = 606 sqm



First Floor



Ground Floor



Site Plan

20 Glendenning Rise, Mornington

This floorplan is for illustration purposes only and no warranty is given to its accuracy. Purchasers are advised to carry out their own investigations. Produced by realtywriters (03) 5970 2222