



131 Koornalla Crescent MOUNT ELIZA VIC

4 3 2

Poised over a tranquil leafy valley and the beach not far from the end of the street, this 4 bedroom coastal home offers incredible serenity and a flawless new interior in one of Mt Eliza's most coveted sought-after pockets.

An irresistible fusion of lifestyle, location and luxury just a leisurely Sunday stroll to the village and moments from Mt Eliza's choice of top schools, the architect design home makes the most of the valley landscape with beautiful flow out to upper and lower decks where you can sit and take in the natural beauty, while the beautifully transformed interior provides a stunning coastal aesthetic.

Taking your breath away on entry, the amazing outlook instantly captivates with a grand lounge with woodheater

Type : House
Price : \$1,395,000 - \$1,525,000
Land Size : 1336 sqm
View : <https://www.crowdercre.com.au/8551149>

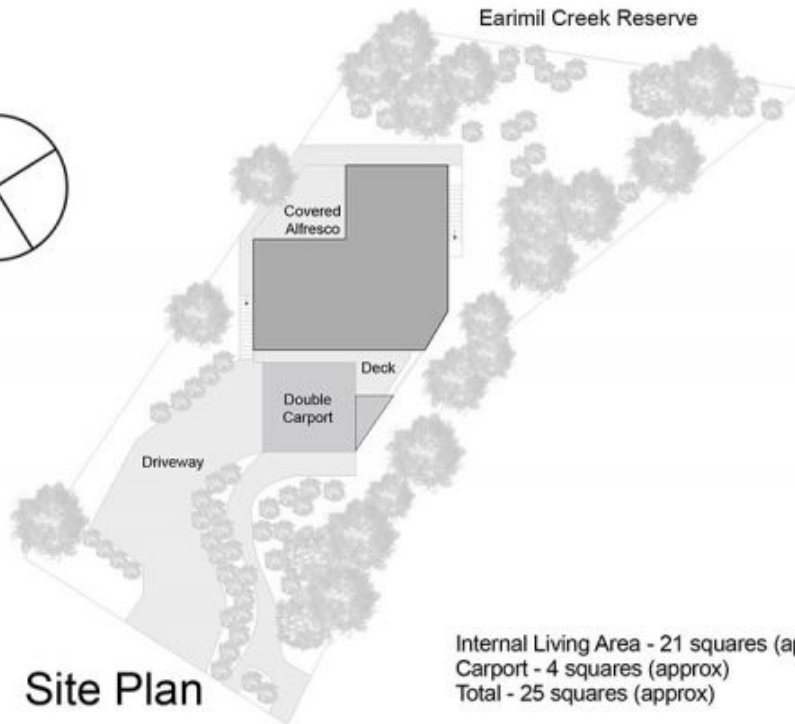


Will Crowder
9787 7221



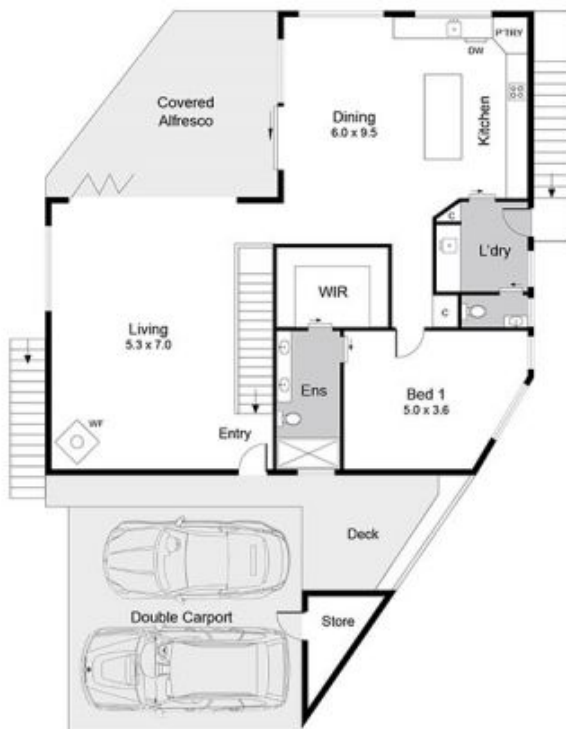
Ben Crowder
9787 7221

[For full version visit the website](https://www.crowdercre.com.au)



Site Plan

Internal Living Area - 21 squares (approx)
 Carport - 4 squares (approx)
 Total - 25 squares (approx)



Ground Floor



Lower Floor

131 Koornalla Crescent, Mount Eliza

This floorplan is for illustration purposes only and no warranty is given to its accuracy. Purchasers are advised to carry out their own investigations. Produced by realtywriters (03) 5970 2222