

7A Warana Way MOUNT ELIZA VIC

3 2 2

Showcasing an impeccable designer palette and crafted to the highest standards, these brand-new single-level residences redefine modern village living, delivering an exceptional fusion of luxury, low-maintenance ease and timeless style - all moments from Mt Eliza Village's boutiques, cafés and restaurants.

Offering a choice of two distinct colour schemes - one embracing a fresh coastal aesthetic, the other a warmer, more contemporary mood - each home shares the same inspired floorplan and exceptional craftsmanship where all you need to do is put up your feet and enjoy the stylish surrounds.

Designed to appeal to downsizers, young professionals

[For full version visit the website](https://www.crowdercre.com.au/8548904)

Type : House
Price : Contact Agent
View : <https://www.crowdercre.com.au/8548904>

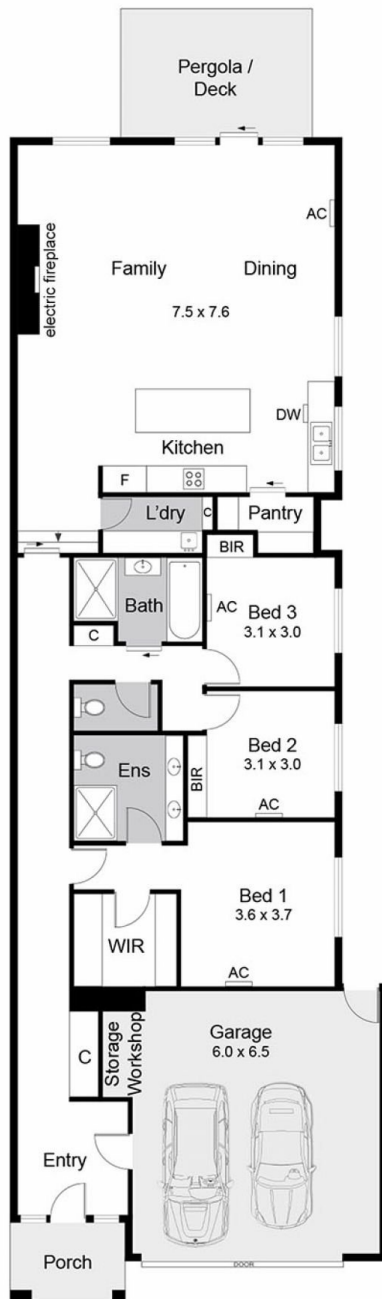
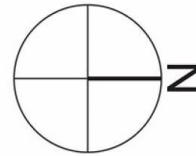


Stewart Lardner
 9787 7221

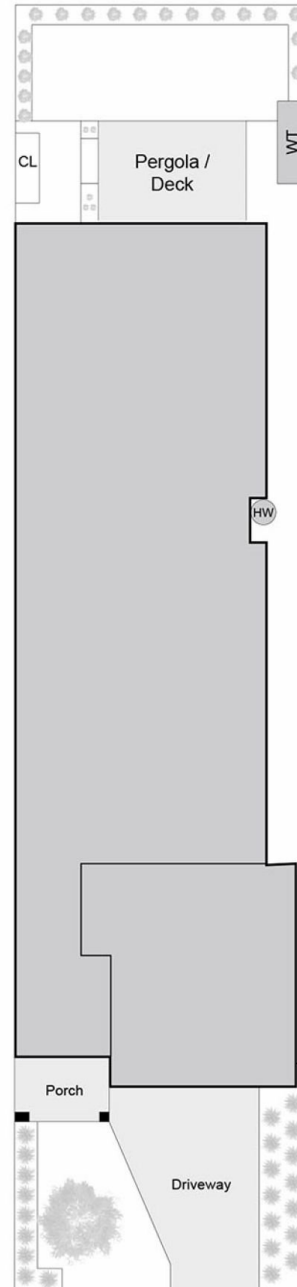


James Crowder
 9787 7221

Internal Living Area - 17.9 squares (approx)
 Garage - 4.3 squares (approx)
 Total - 22.2 squares (approx)



Floor Plan

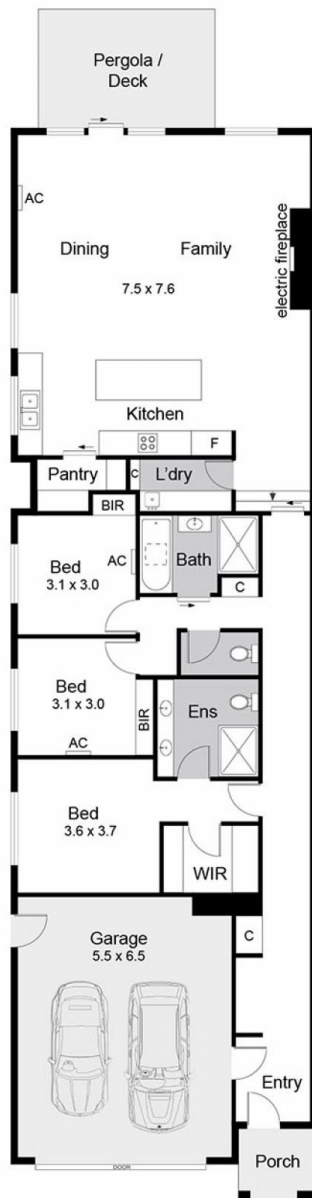
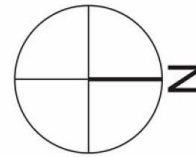


Site Plan

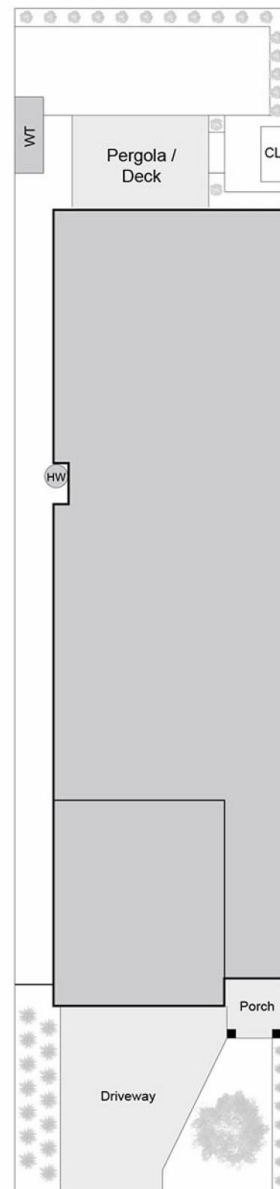
7a Warana Way, Mount Eliza

This floorplan is for illustration purposes only and no warranty is given to its accuracy. Purchasers are advised to carry out their own investigations. Produced by realtywriters (03) 5970 2222

Internal Living Area - 17.9 squares (approx)
 Garage - 4.3 squares (approx)
 Total - 22.2 squares (approx)



Floor Plan



Site Plan

7 Warana Way, Mount Eliza

This floorplan is for illustration purposes only and no warranty is given to its accuracy. Purchasers are advised to carry out their own investigations. Produced by realtywriters (03) 5970 2222