



12 Warana Way MOUNT ELIZA VIC

4 3 2

Combining cutting-edge contemporary design with effortless family functionality, this brand-new architecturally designed four-bedroom residence delivers the ultimate in relaxed, luxury living. Bathed in natural northern light and just moments from the vibrant Mt Eliza village, the home's striking façade and thoughtfully curated interior create an immediate sense of sophistication and calm.

Step inside to discover a flowing open-plan living and dining area that seamlessly connects to beautifully landscaped gardens and an expansive deck - the perfect setting for entertaining or unwinding in style. Purpose-built for modern living, every detail has been considered, from the premium finishes to the intuitive layout that embraces indoor-outdoor living at its finest.

Type : House
Price : \$ 1,700,000
Land Size : 397 sqm
View : <https://www.crowdercre.com.au/8505130>

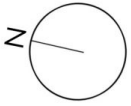


Will Crowder
9787 7221

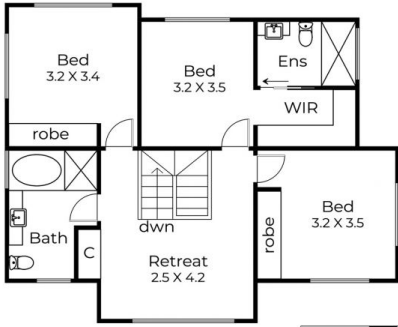


Ben Crowder
9787 7221

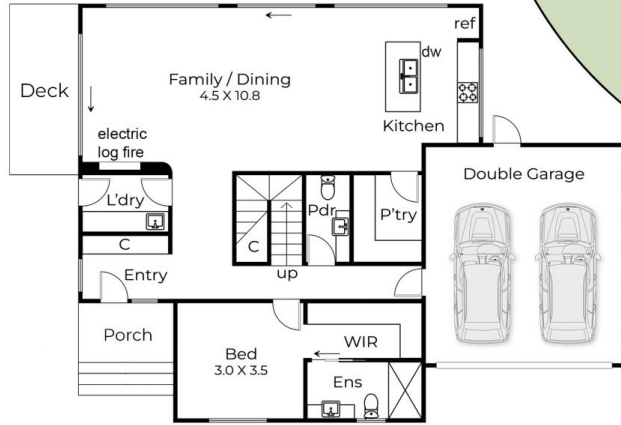
[For full version visit the website](https://www.crowdercre.com.au)



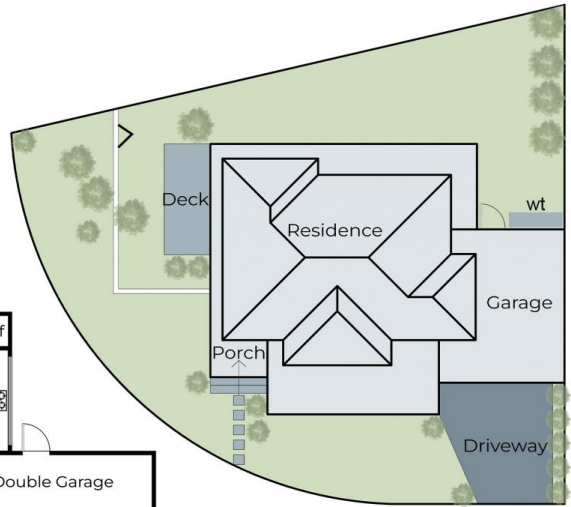
12 Warana Way, Mount Eliza



Upper Floor



Ground Floor



Site Plan

Not to Scale
This plan, including all measurement estimations, is illustrative only and not a substitute for inspecting and undertaking precise measurements of the property