



1 Granya Grove MOUNT ELIZA VIC

4 2 2

Expressions of Interest Closing 23rd September at 3pm
(Unless Sold Prior)

With a breathtaking blend of modern grandeur and resort-style luxury only steps from Ranelagh Beach, a glamorous seaside lifestyle awaits at this 4 bedroom architectural masterpiece.

Barely a year old and wrapped around an inground pool and spa with a first-class alfresco entertaining area and multiple living areas including a sumptuous sunken lounge, the home is a testament to refined living by the sea offering a generous sense of scale, bold design yet overwhelmingly relaxed in spirit.

Type : House
Price : \$3,950,000 - \$4,300,000
Land Size : 701 sqm
View : <https://www.crowdercre.com.au/8458315>



Ben Crowder
9787 7221

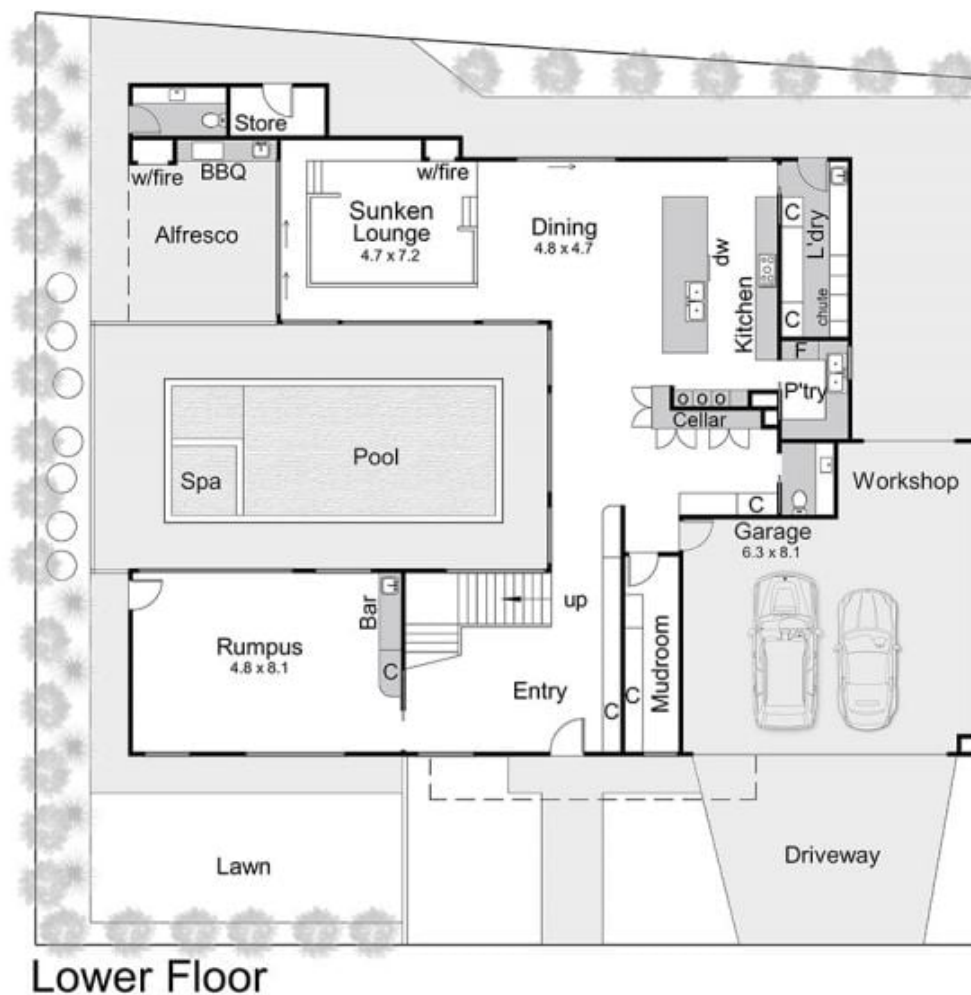


Will Crowder
9787 7221

[For full version visit the website](https://www.crowdercre.com.au)



Internal Living Area : 45.0 Squares (approx)
 Garage : 6.5 squares (approx)
 Total : 51.5 squares (approx)



1 Granya Grove, Mount Eliza

This floorplan is for illustration purposes only and no warranty is given to its accuracy. Purchasers are advised to carry out their own investigations. Produced by realtywriters (03) 5970 2222