



1/7 Spero Avenue MOUNT ELIZA VIC

3 2 2

Superbly situated just 450 metres to vibrant Mount Eliza village, this 3 bedroom unit with tranquil gardens and separate studio delivers absolute serenity and lifestyle ease where strolling into the village for a cafe brunch, yoga class and fresh market produce can be a regular event.

Set behind a lovely private garden and picket fence in St James Mews, the residence is more than meets the eye with a design that caters for those who work from home with entry off both the living area and third bedroom beside the front gate, which would make the ideal home office for those who receive clients.

The light-filled open living and dining areas are defined by soft tones, timber wall panelling, built-in cabinetry and a

Type : House
Price : \$ 1,010,000
Land Size : 501 sqm
View : <https://www.crowdercre.com.au/8457948>

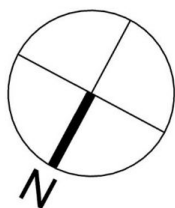


James Crowder
9787 7221



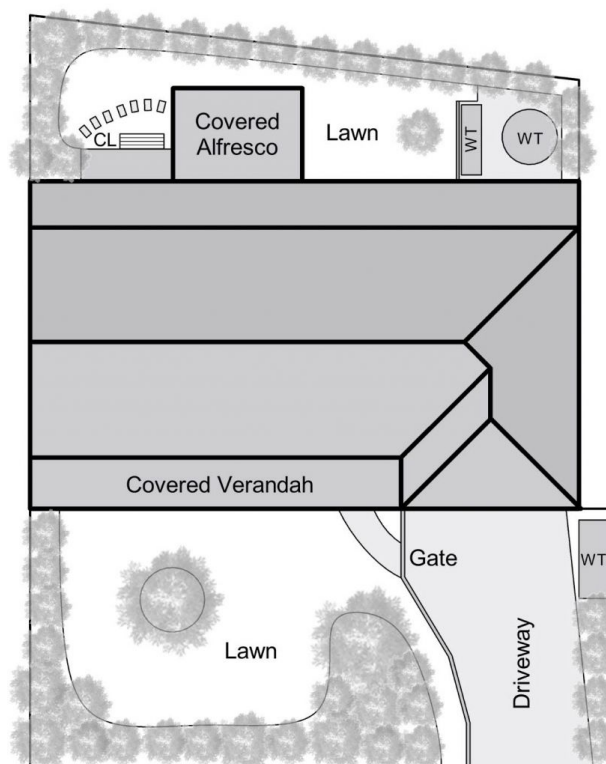
Deb Ketting-Olivier
9787 7221

[For full version visit the website](https://www.crowdercre.com.au)

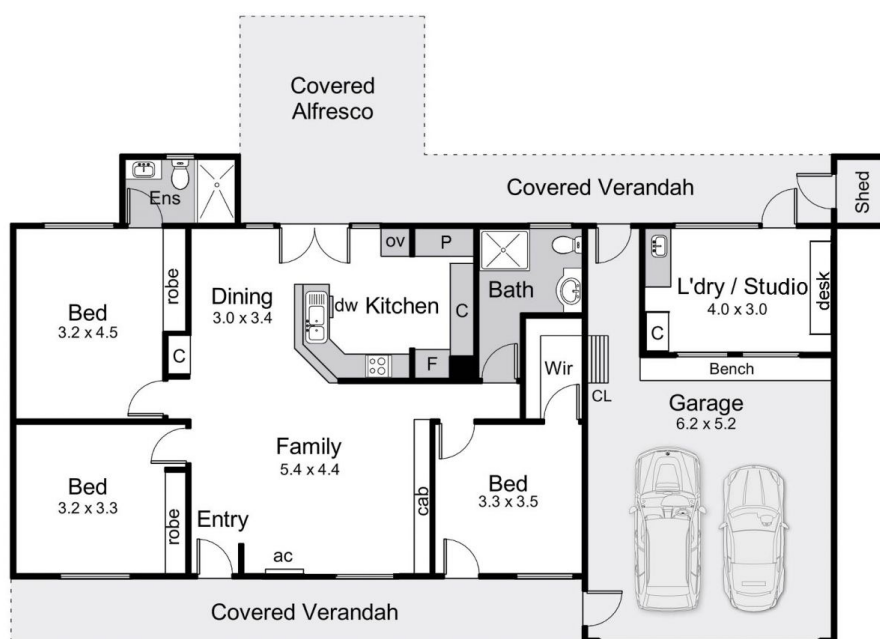


Internal living area = 15.8 squares (approx)
 External living area = 5.1 squares (approx)
 Garage area = 3.8 squares (approx)
 Total area = 24.7 squares (approx)

Land area = 501 sqm (approx)



Site Plan



Floor Plan

1/7 Spero Avenue, Mount Eliza

This floorplan is for illustration purposes only and no warranty is given to its accuracy. Purchasers are advised to carry out their own investigations. Produced by **realtymw** (03) 5970 2222