



13a Gibson Avenue TYABB VIC

3 2 2

With outstanding natural light, exquisite finishes and a fabulous flow to alfresco space, this single-level townhouse provides elevated atmosphere and sleek surrounds in the heart of this charming peninsula town.

Life here is a breeze positioned only a stone's throw from cafes, takeaways, IGA, shops and the train station, with Flinders Christian Community College, Tyabb Primary School and Padua College just minutes away, while weekend adventures await with Yaringa Boat Harbour and Hastings' extensive foreshore just minutes away.

Just 12 months old, designer flair creates stunning spaces throughout featuring an open plan living and dining area moored by a sleek kitchen with white porcelain counters,

Type : House

Price : \$ 742,500

View : <https://www.crowdercre.com.au/8457925>

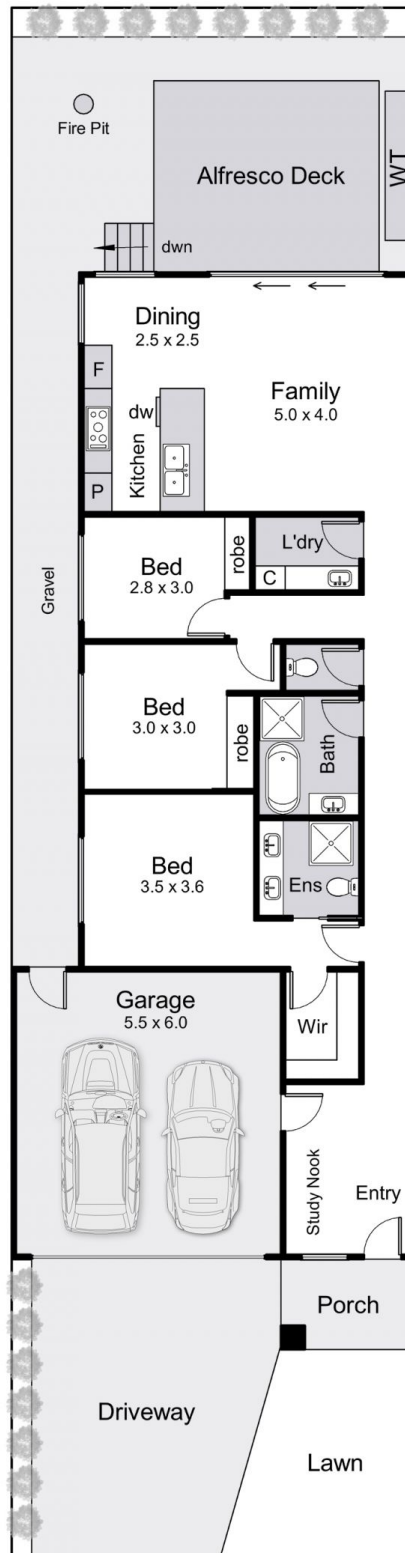
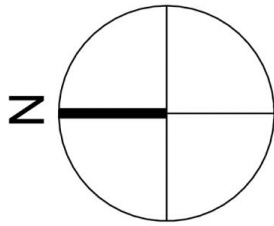


Will Crowder
9787 7221



Ben Crowder
9787 7221

[For full version visit the website](https://www.crowdercre.com.au)



Internal area = 12.5 squares (approx)
 Deck area = 3.6 squares (approx)
 Garage area = 2.2 squares (approx)
 Total area = 18.3 squares (approx)

Floor Plan

13A Gibson Avenue, Tyabb

This floorplan is for illustration purposes only and no warranty is given to its accuracy. Purchasers are advised to carry out their own investigations. Produced by **realitywriters** (03) 5970 2222