



21 Hopes Rise FRANKSTON SOUTH VIC

3 3 2

Among one of Olivers Hills' best vantage points with surreal views across Port Phillip Bay, this enchanting 1950s clinker brick home is one of the most eminent on this prominent coastal spot characterised by a sensational curved conservatory window and broad terrace pointing directly at the spectacular water vista.

A distinguished blend of English farmhouse charm with a touch of period elegance, the residence pays homage to the architectural essence of this esteemed neighbourhood steps from the beach, boat ramp and pier, while scope exists to renovate, modernise and add enormous value to this highly envied seaside position.

Set on a corner allotment with easy driveway access off

Type : House
Land Size : 783 sqm
View : <https://www.crowdercre.com.au/8453233>

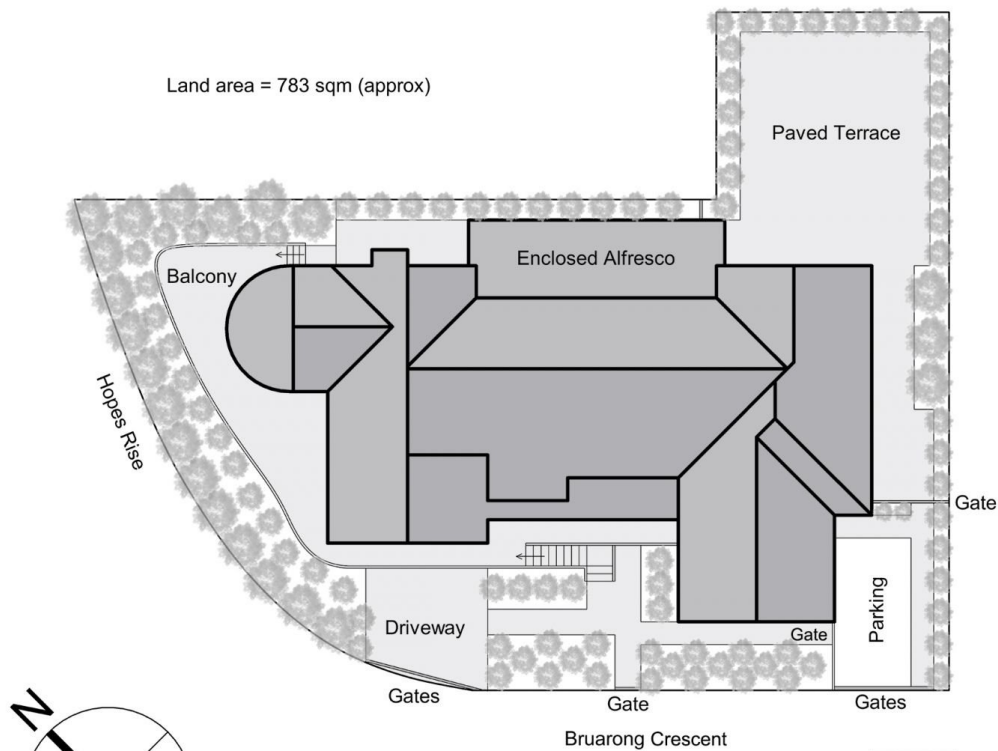


James Crowder
9787 7221

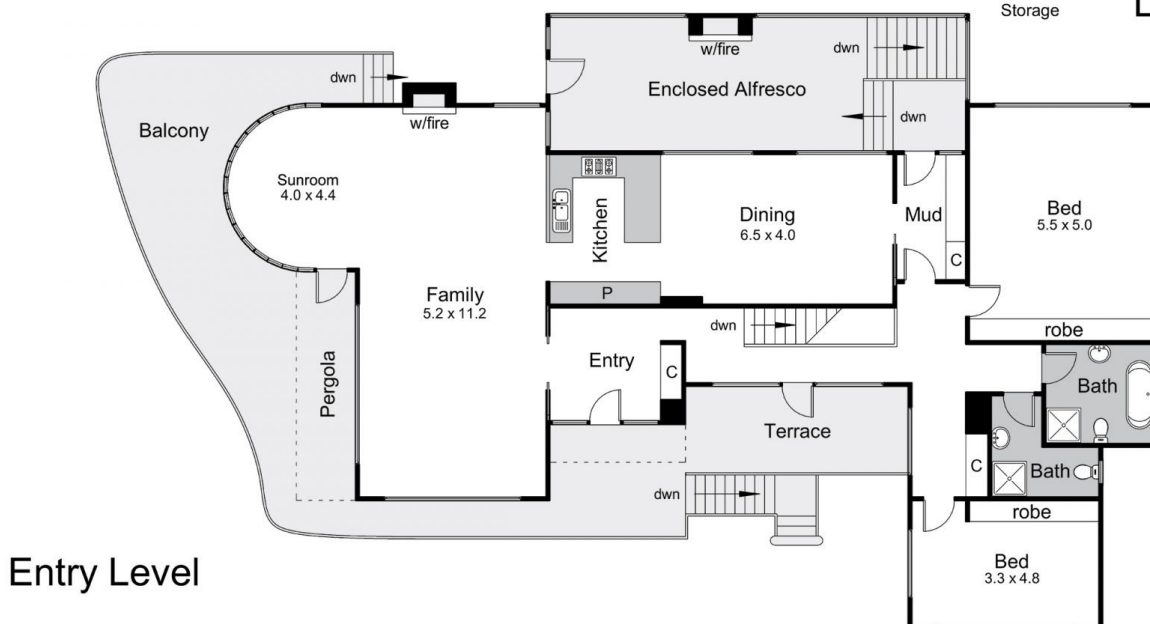
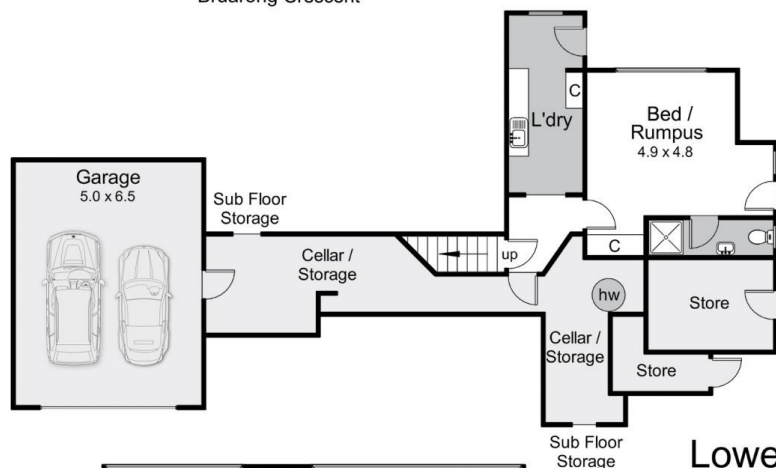


Deb Ketting-Olivier
9787 7221

[For full version visit the website](https://www.crowdercre.com.au)



Internal area = 30.2 squares (approx)
 External area = 3.5 squares (approx)
 Garage area = 12.4 squares (approx)
 Total area = 46.1 squares (approx)



21 Hopes Rise, Frankston South

This floorplan is for illustration purposes only and no warranty is given to its accuracy. Purchasers are advised to carry out their own investigations. Produced by **realtymw** (03) 5970 2222