



## 58 Granya Grove MOUNT ELIZA VIC

4 2 2

Enjoy lavish space and luxury inclusions at this extra-ordinary seaside address, just a pleasant walk from Ranelagh Beach, moments from the vibrant village, exclusive schools and the Mornington Peninsula's plethora of lifestyle spoils.

A fabulous chance to upsize in one of Mt Eliza's favourable streets, this 4 bedroom home offers 4 large living and dining spaces and enviable entertaining options including adjoining formal lounge and dining areas with space for a grand piano, a poolside rumpus room with a wetbar and concertina doors providing seamless flow out to a fabulous covered alfresco deck.

Surrounded by scented gardens with tall hedging adding

**Type** : House  
**Price** : \$1,900,000 - \$2,090,000  
**Land Size** : 980 sqm  
**View** : <https://www.crowdercre.com.au/8453049>

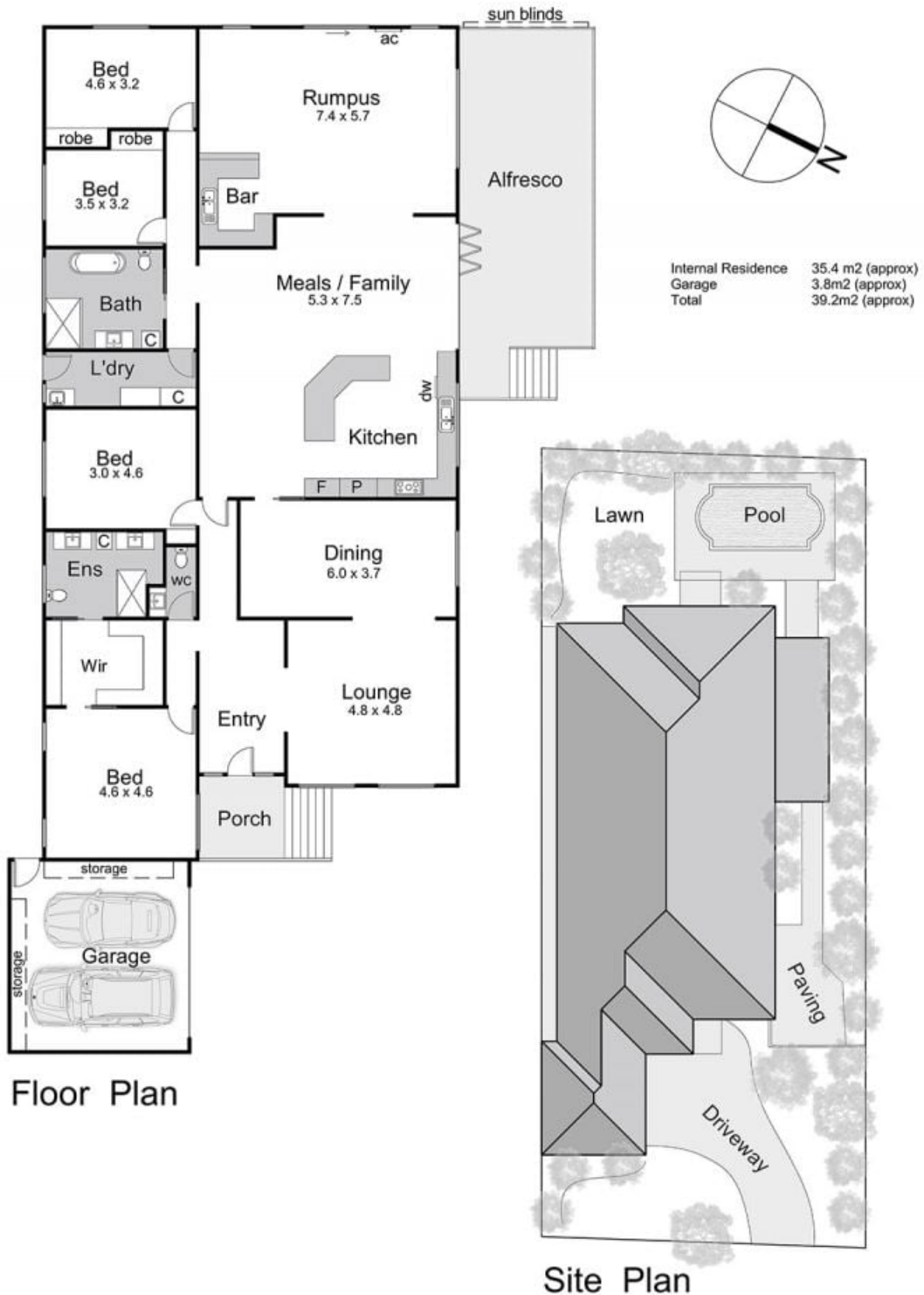


**Ben Crowder**  
9787 7221



**Will Crowder**  
9787 7221

[For full version visit the website](https://www.crowdercre.com.au)



## 58 Granya Grove, Mount Eliza

This floorplan is for illustration purposes only and no warranty is given to its accuracy. Purchasers are advised to carry out their own investigations. Produced by **realitywriters** (03) 5970 2222