



1B Palm Court FRANKSTON VIC

4 2 2

INSPECTION BY APPOINTMENT ONLY

Fully celebrating its absolute beachfront position right behind the dunes of Long Island's broad sandy beach, this modern contemporary residence has uninterrupted panoramic views along beautiful coastline and across the bay to Melbourne's city skyline.

With its own garden path over the dunes to the soft white sand for your morning walk or for a cooling dip in the afternoon, the home offers blissful living with sun-kissed living and entertaining areas and only the sound of waves in the air, while nearby a footbridge over Kananook Creek provides a shortcut into Frankston city centre for a great choice of restaurants, major shopping and train station.

Type : House
Price : \$2,800,000 - \$3,080,000
Land Size : 451 sqm
View : <https://www.crowdercre.com.au/8453037>

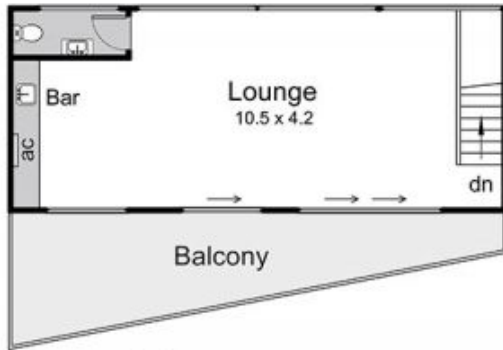


James Crowder
9787 7221



Ben Crowder
9787 7221

[For full version visit the website](https://www.crowdercre.com.au)

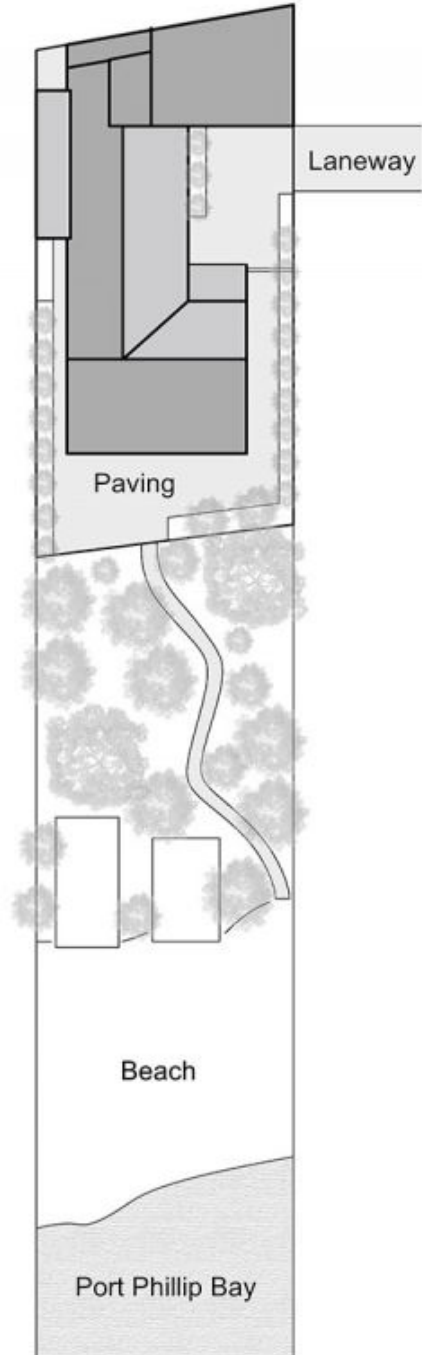


Upper Floor



Lower Floor

Internal Residence	27.6 squares (approx.)
Garage	5.2 squares (approx.)
Total	32.8 squares (approx.)



1B Palm Court, Frankston

This floorplan is for illustration purposes only and no warranty is given to its accuracy. Purchasers are advised to carry out their own investigations. Produced by realtywriters (03) 5970 2222