



1 Summerhill Crescent MOUNT ELIZA VIC

4 3 2

A luxury home with a touch of the tropics, the serenity of the seaside and some wholesome country goodness, this contemporary residence offers the full gamut of lifestyle pleasures minutes from the heart of Mt Eliza Village.

A privileged position walking distance to Peninsula Grammar, primary and secondary schools and a little further to the vibrant village and beaches beyond, the sleek modern 4 bedroom home offers surprising views over Port Phillip Bay, while a north-facing solar-heated fully tiled inground pool provides a resort-style vibe beside gardens of palms and a poolside pavilion.

Hidden at the rear, a mini "farmyard" adds a wholesome element, with a fenced veggie garden, garden shed and a

Type : House
Price : \$1,500,000 - \$1,650,000
Land Size : 900 sqm
View : <https://www.crowdercre.com.au/8453036>

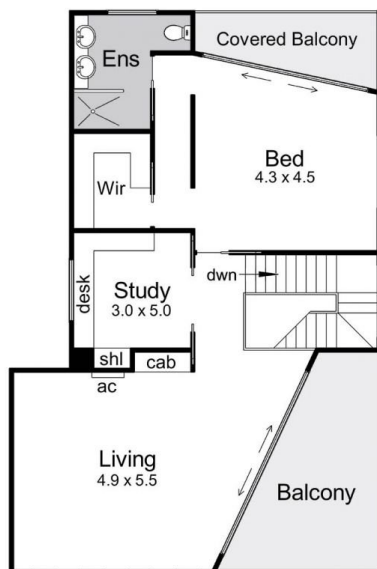


James Crowder
9787 7221

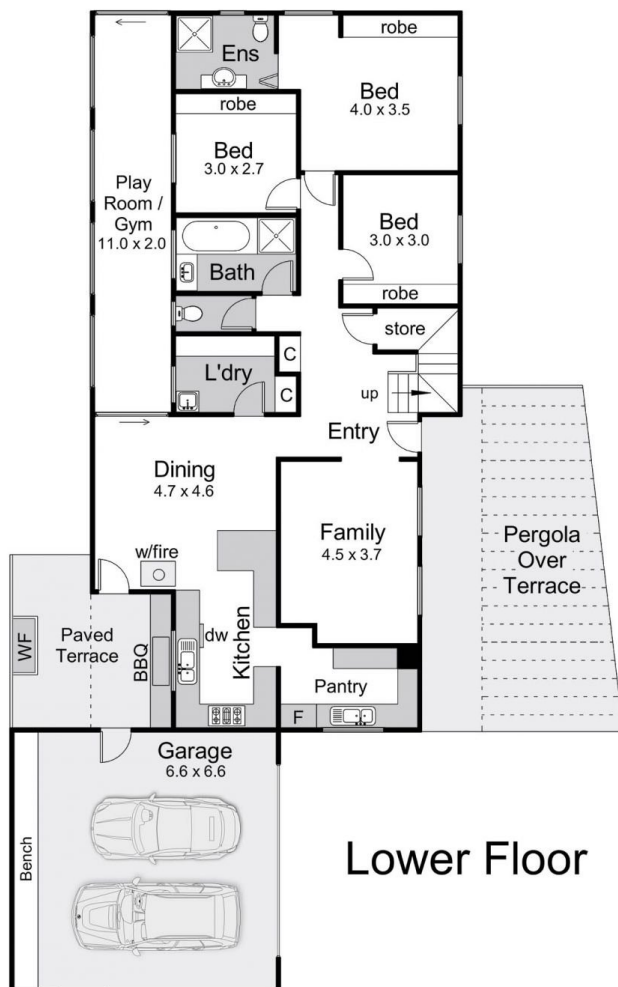


Deb Ketting-Olivier
9787 7221

[For full version visit the website](https://www.crowdercre.com.au)

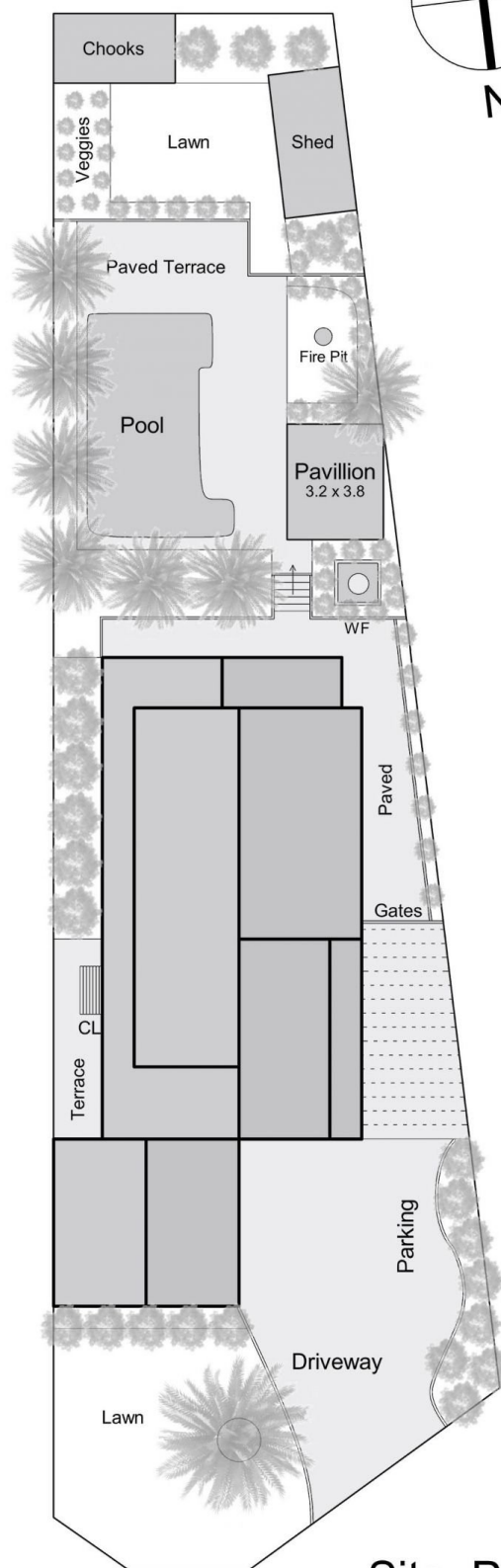


Upper Floor



Lower Floor

Internal living area = 26 squares (approx)
 External living area = 8 squares (approx)
 Garage area = 4.5 squares (approx)
 Total area = 38.5 squares (approx)



Site Plan

1 Summerhill Crescent, Mount Eliza

This floorplan is for illustration purposes only and no warranty is given to its accuracy. Purchasers are advised to carry out their own investigations. Produced by **realtymw** (03) 5970 2222