



39 Quinns Parade MOUNT ELIZA VIC

3 2 2

Expressions of Interest Closing Tuesday 12th August at 2pm (Unless Sold Prior)

Enchanting character in leafy Mt Eliza, this all-original 3 bedroom home offers tranquility and affordability for retirees or a wonderful opportunity for first home buyers to take a leap into this prestigious peninsula neighbourhood.

Steps from The Corner Pantry Cafe with Mt Eliza Park and playground just beyond, and walking distance to Peninsula Grammar, Mt Eliza Primary School and St Thomas More primary school, the home is beautifully positioned to lap up the local spoils with the vibrant village and beaches also just moments away.

Type : House
Land Size : 691 sqm
View : <https://www.crowdercre.com.au/8445506>

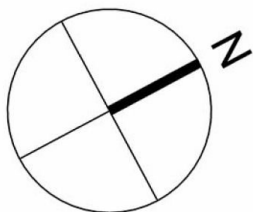


Ben Crowder
9787 7221

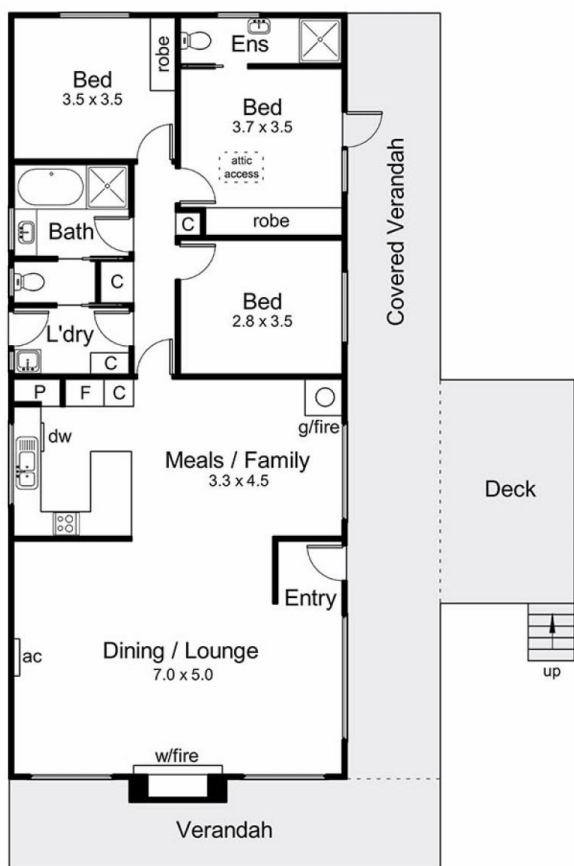


Will Crowder
9787 7221

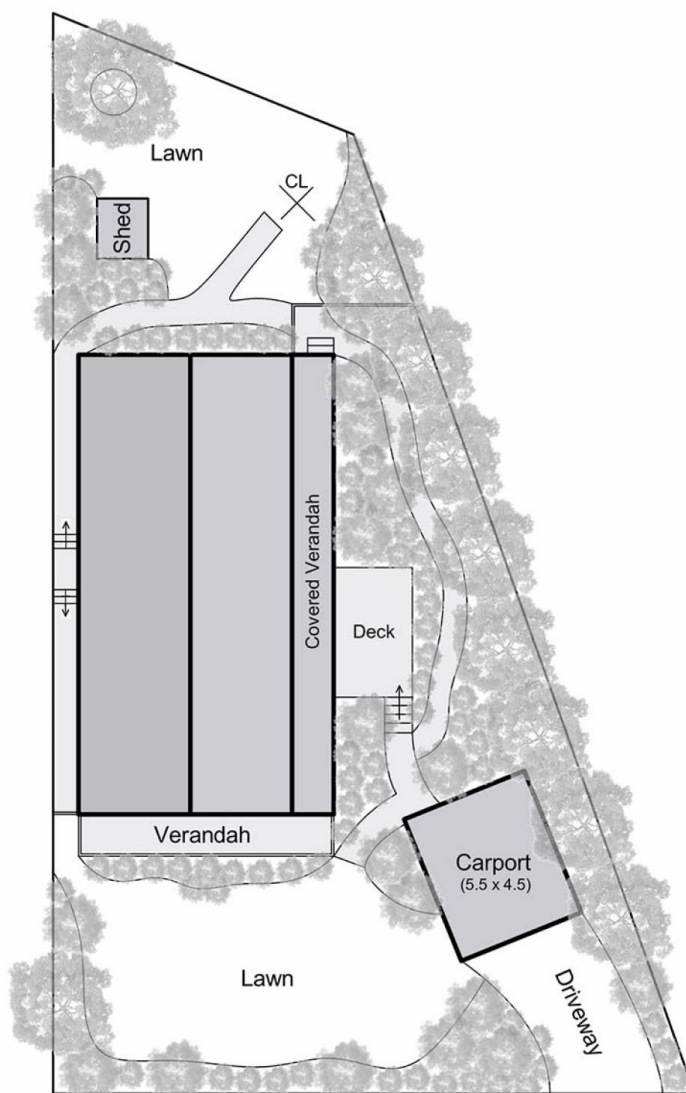
[For full version visit the website](https://www.crowdercre.com.au)



Internal area = 13 squares (approx)
 Deck area = 6.8 squares (approx)
 Total area = 19.8 squares (approx)



Floor Plan



Site Plan

39 Quinns Parade, Mount Eliza

This floorplan is for illustration purposes only and no warranty is given to its accuracy. Purchasers are advised to carry out their own investigations. Produced by **realitywriters** (03) 5970 2222