

12A Warana Way MOUNT ELIZA VIC

4 3 2

Celebrating a coastal vibe and all the high-class elegance this Mornington Peninsula village represents, this brand new designer residence offers an exceptional lifestyle experience a stone's throw from Mt Eliza's village heart with shops, boutiques and prestigious schools all just an easy walk away.

Offering turn-key convenience and move-in readiness, the four-bedroom home impresses with refined class and sensational sunlight, including open plan living, spacious second living and an upper level with bay glimpses that send a reminder that the beach is only minutes away.

With beautiful oak floorboards and high ceilings amplifying the glorious sense of space, the home opens up to a vast

Type : House
Price : \$1,800,000 - \$1,980,000
Land Size : 394 sqm
View : <https://www.crowdercre.com.au/8445505>

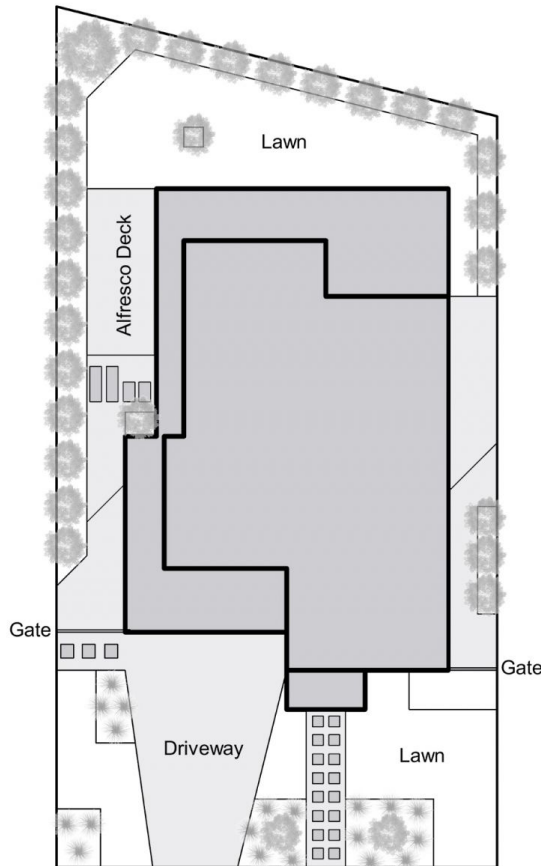
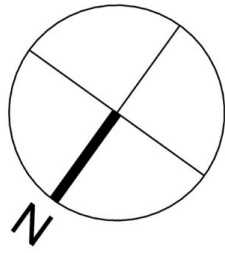


Will Crowder
9787 7221



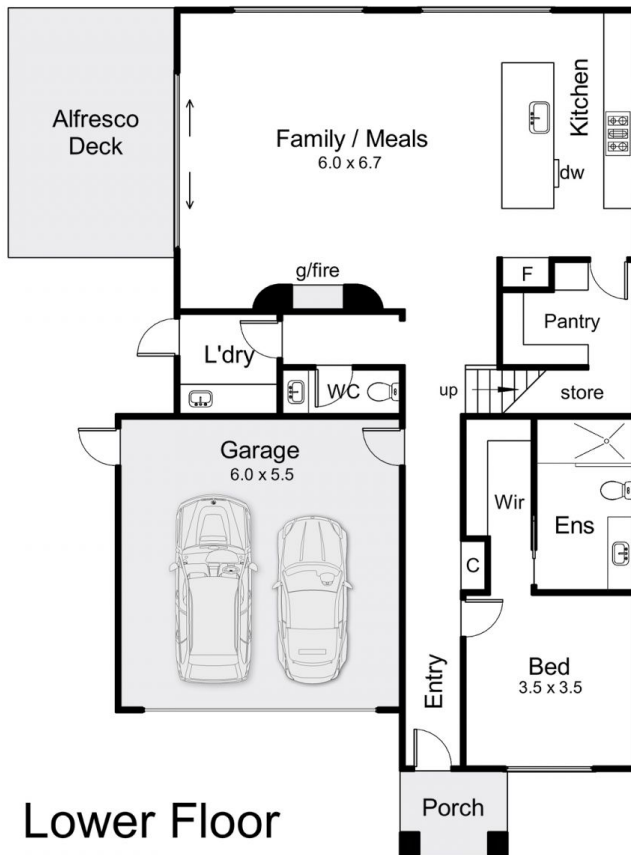
Ben Crowder
9787 7221

[For full version visit the website](https://www.crowdercre.com.au)

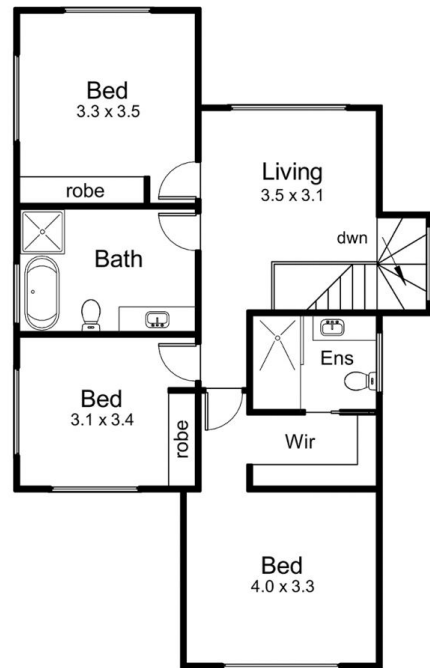


Internal area = 20.5 squares (approx)
 Garage area = 3.8 squares (approx)
 Deck area = 2.2 squares (approx)
 Total area = 26.5 squares (approx)

Site Plan



Lower Floor



Upper Floor

12A Warana Way, Mount Eliza

This floorplan is for illustration purposes only and no warranty is given to its accuracy. Purchasers are advised to carry out their own investigations. Produced by **realitywriters** (03) 5970 2222